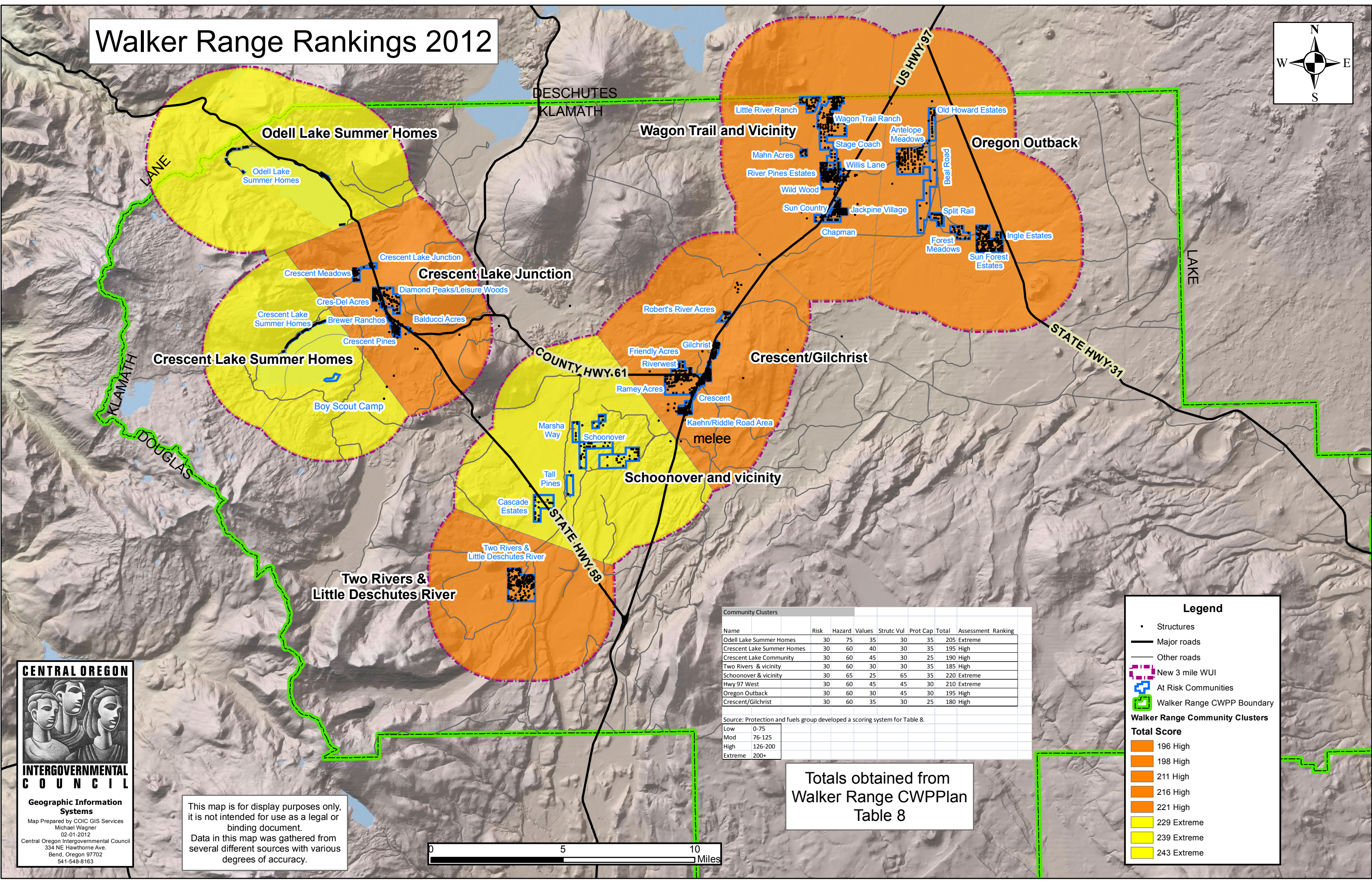
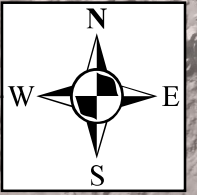


Walker Range Rankings 2012



Odell Lake Summer Homes

Odell Lake Summer Homes

Wagon Trail and Vicinity

Little River Ranch
Wagon Trail Ranch
Old Howard Estates

Oregon Outback

Mahn Acres
River Pines Estates
Wild Wood
Sun Country
Chapman
Jackpine Village
Split Rail
Forest Meadows
Sun Forest Estates

Crescent Lake Junction

Crescent Lake Junction
Crescent Meadows
Cres-Del Acres
Crescent Lake Summer Homes
Brewer Ranchos
Crescent Pines
Boy Scout Camp

Crescent Lake Summer Homes

Crescent/Gilchrist

Robert's River Acres
Friendly Acres
Riverwest
Ramey Acres
Crescent
Kaehn/Riddle Road Area

Schoonover and vicinity

Marsha Way
Schoonover
Tall Pines
Cascade Estates

Two Rivers & Little Deschutes River

Two Rivers & Little Deschutes River

Community Clusters							
Name	Risk	Hazard	Values	Struc Vul	Prot Cap	Total	Assessment Ranking
Odell Lake Summer Homes	30	75	35	30	35	205	Extreme
Crescent Lake Summer Homes	30	60	40	30	35	195	High
Crescent Lake Community	30	60	45	30	25	190	High
Two Rivers & vicinity	30	60	30	30	35	185	High
Schoonover & vicinity	30	65	25	65	35	220	Extreme
Hwy 97 West	30	60	45	45	30	210	Extreme
Oregon Outback	30	60	30	45	30	195	High
Crescent/Gilchrist	30	60	35	30	25	180	High

Source: Protection and fuels group developed a scoring system for Table 8.

Low	0-75
Mod	76-125
High	126-200
Extreme	200+

Totals obtained from Walker Range CWPPlan Table 8

Legend

- Structures
- Major roads
- Other roads
- New 3 mile WUI
- At Risk Communities
- Walker Range CWP Boundary

Walker Range Community Clusters

Total Score

- 196 High
- 198 High
- 211 High
- 216 High
- 221 High
- 229 Extreme
- 239 Extreme
- 243 Extreme

CENTRAL OREGON INTERGOVERNMENTAL COUNCIL

Geographic Information Systems

Map Prepared by COIC GIS Services
Michael Wagner

02-01-2012
Central Oregon Intergovernmental Council
334 NE Hawthorne Ave.
Bend, Oregon 97702
541-548-8163

This map is for display purposes only, it is not intended for use as a legal or binding document.
Data in this map was gathered from several different sources with various degrees of accuracy.

